

VANDERHOOF

ALL BREEDS BULL SALE



APRIL 11, 2026

BC LIVESTOCK CO-OP
VANDERHOOF SALE YARD

NORTHERN ACREAGE SUPPLY LTD

Proudly Serving Northern British Columbia



Supplies That Keep Your Operation Running

- KIOTI TRACTORS & IMPLEMENTS
- COMPLETE ELECTRIC FENCE SYSTEMS
- SPECIALTY ANIMAL & ACREAGE FENCING
- POSTS, RAILS & WIRE FENCING
- WILDLIFE & PREDATOR CONTROL
- FEED & SUPPLEMENTS
- TUBS, WATERERS, FEEDERS & TOOLS
- BEEKEEPING SUPPLIES

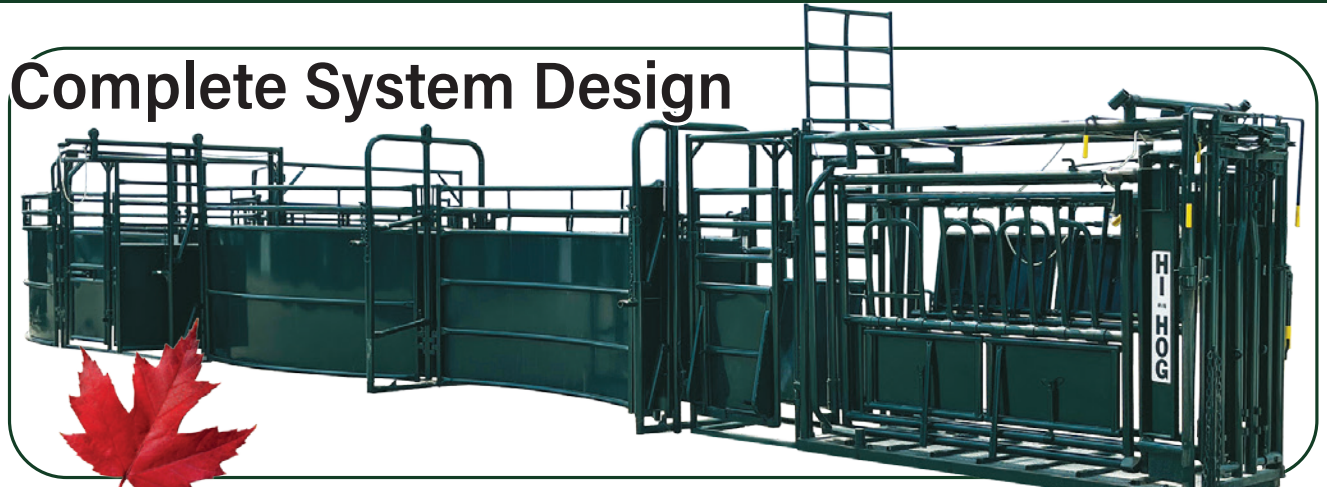


www.northernacreage.ca

4870 Continental Way, Prince George, BC
250-596-2273 • sales@northernacreage.ca

HI-HOG IS PROUD TO SUPPORT B.C. CATTLE RANCHERS AND THE VANDERHOOF ALL BREEDS BULL SALE

Complete System Design



Heavy Duty Squeeze Chutes and Head Holders



Calving Equipment



Cattle Handling



Feeders & Fencing

Contact us at
1-800-661-7002



View us on line
www.hi-hog.com



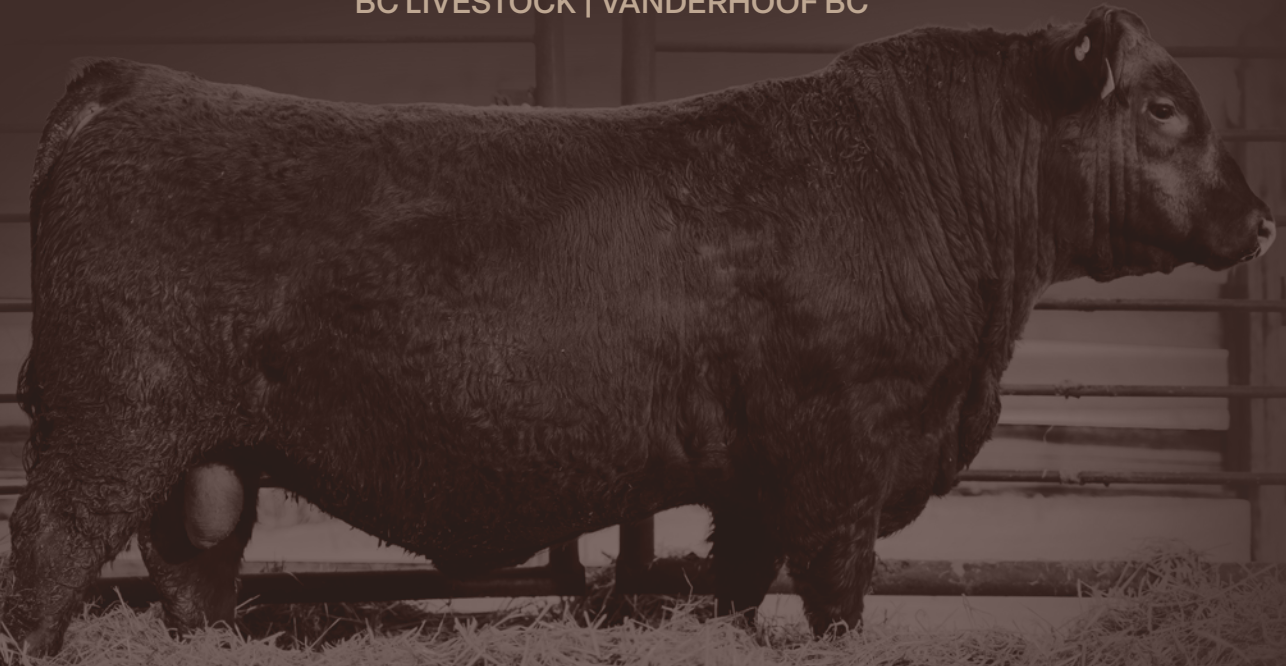
VANDERHOOF

ALL BREEDS BULL SALE

SATURDAY

APRIL 11, 2026 | 1:00PM

BC LIVESTOCK | VANDERHOOF BC



Welcome TO THE 51ST VANDERHOOF ALL BREEDS BULL SALE

Welcome to the annual Vanderhoof All Breeds Bull Sale, we are pleased to have on offer Hereford, Gelbvieh, Charolais, Simmental and Angus bulls, as well as 3 pens of replacement heifers this year. We would like to acknowledge the many of you who have supported the sale over the past 50 years and we are proud to bring another set of quality bulls into the sale yard for the 51st! 15 consignors offering bulls backed by programs they have worked hard to establish, for a great opportunity to select your next breeding sires. Whether you're looking for a herd bull or a heifer bull, there are many options that we are confident in. If you're wanting to add colour, pounds, performance or leading genetics, there is something in this sale to benefit any herd.

Please do not hesitate to reach out to any of us prior to the sale with questions on the bulls or our programs. We are excited to invite you to the Vanderhoof All Breeds Bulls Sale, April 11th 2026.

Thank you for your support over the past 50 years!

General INFORMATION

HOW CAN I VIEW THE BULLS?

Contact the consigner and visit their farm ahead of transport to the sale. Check www.dlms.ca from mid-March to April to see if a consigner has put videos online. Come to the BC Livestock yard, Friday, April 10th starting at 1 pm to see the bulls in their pens. The Bull Sale will be hosting a BBQ for our viewers between the hours of 1:00pm and 3:00pm on Friday.

HOW CAN I BID?

In Person: Sign up for at bid number at the BC Livestock Office.

Online: DLMS (Direct Livestock Marketing Services) will be used to offer online viewing and real time bidding on sale day. To receive a bid number for online bidding, you must register and receive buyer approval in advance. Go to www.dlms.ca for information or contact a DLMS representative at 780-732-4384.

Phone-In: Please find multiple contact numbers in the Sale Information section of this catalog, any will be happy to assist you.

THE CATALOG

This catalogue contains not only ads from breeders but also many great businesses which have shown their support for the BC Agriculture industry and this community venture. Use this catalogue all year long to contact these businesses. Please give them your support. Thank you to all our commercial advertisers! Every effort has been made to ensure the accuracy of this catalogue. However, all announcements at sale time, written or oral, supersede any written material in this catalogue

OUR VOLUNTEERS

This sale is run by a committee of Purebred Cattle Breeders who work together to organize and host this sale.

DELIVERY

Please consult with individual consignors before the sale.

Sale INFORMATION

ONLINE BIDDING

DLMS..... www.dlms.ca
Mark Shologan 780-699-5082

SALE REPRESENTATIVES/PHONE IN BIDS

Mike Pritchard 250-524-0681
Wayne Jordan 250-319-0873
Kenny Allison 250-571-9045
Jamie Wiens 250-567-8465
Alex Kulchar 250-570-9547

OFFICE PHONE

BC Livestock, Vanderhoof 250-567-4333

LIVESTOCK INSURANCE

Hartford Insurance available through BC Livestock

Sale COMMITTEE

CHAIRMAN

Brock Young 250-570-2535

VICE CHAIRMAN

Kolby Page 250-944-0264

SECRETARY

Haley Bell 250-845-4375

DIRECTORS

Frank Ludwig | Angus 250-567-9466
Kevin Thomson | Angus 250-567-5609
Kolby Page | Charolais 250-944-0264
Haley Bell | Hereford 250-845-4375
Brock Young | Simmental 250-570-2535
Barb Mazzereeuw | Director At Large 250-567-8137
Jamie Wiens | Buyer Rep & All Other Breeds .. 250-567-8465

Schedule OF EVENTS

THURSDAY, APRIL 9

Yard Open for Consignors To Arrive

FRIDAY, APRIL 10

All Bulls Must Be In Stalls 9:00am
Sifting & Weighing Of Bulls 10:00am
Yard Open for Viewing Of Sale Animals 1:00pm
Bull Viewer's BBQ..... 1:00pm - 3:00pm

SATURDAY, APRIL 11

Yard Open For Viewing Of Sale Animals 8:00am
Sale Starts 1:00pm

2026 SALE ORDER

Breeds sell in catalog order as below:
Heifers, Simmental, Hereford, Gelbvieh, Charolais, Angus

For Information on when individual lots sell, refer to the sale order posted on DLMS.

Bull VIEWERS BBQ

Please join us on **Friday, April 10 from 1:00pm - 3:00pm** to view the bulls, socialize and enjoy a hamburger cooked by the BC livestock Auction Staff.

SPONSORED BY:

Vanderhoof All Breed's Bull Sale Committee

Sale DAY GIVEAWAYS

Join us on **Saturday, April 11** for sale day and have your chance at the following draws!

RANDOM DRAWS

Items will be drawn throughout the sale. To be eligible you must have a bid number. You must be on-site to win these Bid Number Prizes.

WRANGLER 4-H CLUB FUNDRAISER

Be sure to check out the Wrangler 4-H Club's fundraising basket at this year's sale! The basket has been generously put together by the members.

All proceeds help support club activities, projects, and opportunities for our 4-H members. Thank you for supporting our youth—your bids make a difference!

Breed EPD AVERAGES

EPD's cannot be compared between breeds. EPD's listed in this catalog are as of February 2026. Please ask consignors directly for updated information.

EXAMPLE OF EPD USE

To use EPDs effectively you must understand how they work. Imagine you are interested in purchasing a couple of bulls for your herd. You are looking at the EPDs in a sale catalogue. Bull A has a weaning weight EPD of +10 and Bull B has a weaning weight of +60. What does that mean? How can you use the EPDs to choose between the two bulls? If these animals were randomly mated with 10 similar cows, we would expect the group average weaning weight of Bull A's offspring to be 50 lbs lighter than that of Bull B's (60-10=50).

ANGUS

CE	BW	WW	YW	MK	CW	REA	MARB
3.3	2.0	56	99	24	44	0.57	0.49
2.2	1.3	44	75	25	26	0.42	0.24

CHAROLAIS

CE	BW	WW	YW	MK	CW	REA	MARB
5.5	0.2	61.2	112.7	23.0	25.0	0.76	0.07

GELBVIEH

CE	BW	WW	YW	MK	CW	REA	MARB
13	0.1	71	104	23	32	0.62	0.2

HEREFORD

CE	BW	WW	YW	MK	CW	REA	MARB
3.6	2.5	56.5	90.4	27.0	57.2	0.20	-0.01

SIMMENTAL

CE	BW	WW	YW	MK	CW	REA	MARB
7.1	3.4	79.1	115.1	26.2	31.1	0.91	-0.06

CE: Calving Ease **BW:** Birth Weight **WW:** Weaning Weight
YW: Yearling Weight **MK:** Milk **CW:** Carcass Weight
REA: Rib-Eye Area **MARB:** Marbling

Sale CONSIGNORS

ANGUS

CHARCOAL CREEK CATTLE COMPANY

Kyle & Jessica Price
Fort Fraser, BC | 250-896-1599
charcoalcreekcattle@gmail.com
Lots 127, 128, 129, 130

DG CATTLE CO.

Dan & Georgia Dykstra
Vanderhoof, BC | 250-570-7866 or 250-567-0780
d.gcattle@hotmail.com
Lots 102, 131, 132, 133

HENKEL CREEK ANGUS

Glen & Denise Stewart
Burns Lake, BC | 250-695-6652
stewart@henkelcreekangus.ca
Lots 154, 155, 156, 157

HIGH HAULIN' ANGUS

Jonathan Vandermooren
Houston, BC | 250-845-4878
jon_vdm@yahoo.com
Lots 145, 146

J&R RANCH

Ron & Jackie Groot
Houston, BC | 250-845-9211
rongroot@telus.net
Lots 134, 135

KN FARMS

Kevin & Nickie Thomson
Vanderhoof, BC | 250-567-5609 or 250-567-8452
knfarms3@gmail.com
Lots 136, 137, 138, 139, 140, 141, 142

LUDWIG FARMS - SKARA BRAE ANGUS

Frank & Miriam Ludwig
Vanderhoof, BC | 250-567-9466 or 250-567-8949
ludwigfarms23@gmail.com
Lots 143, 144

NORTH 40 RED ANGUS

Mike & Brenda Wheeler
Vanderhoof, BC | 250-567-4020 or 250-567-0764
north.40@live.ca
Lots 147, 148, 149, 150, 151, 152, 153

CHAROLAIS

TK CATTLE COMPANY

Tate & Kolby Page
Vanderhoof, BC | 250-944-0264 or 250-944-0415
tkcattlecompany@gmail.com
Lots 123, 124, 125, 126

GELBVIEH

CROOKED CREEK RANCH

Matt & Barb Mazereeuw
Vanderhoof, BC | 250-567-8137 or 250-570-9478
matt-barb@hotmail.com
Lots 119, 120

HOLMES RIVER RANCH

Matthew & Megan Vogel
McBride, BC | 250-569-7968
vog1@hotmail.com
Lots 103, 121, 122

HEREFORD

SINKUT CREEK RANCH

Carsten Christensen
Vanderhoof, BC | 250-567-9436 or 250-567-7350
scranch92@gmail.com
Lots 116, 117

VALLEE CREEK HEREFORDS

Haley Bell
Houston, BC | 250-845-4375
haleybell20@yahoo.com
Lots 101, 115

SIMMENTAL

CROSBY CATTLE

Ron & Lois Crosby
Vanderhoof, BC | 250-567-4127 or 250-567-0521
ronloiscrosby@gmail.com
Lots 104, 105, 106

RED IRON SIMMENTALS

Brock & Brittanie Young
Vanderhoof, BC | 250-570-2535
bbcattle2@yahoo.ca
Lots 107, 108, 109, 110, 111, 112, 113, 114

Thank you to our consignors for your trust in our sale.

Interactive Lessons & Tools

WorkWell APP

English | Punjabi
Spanish | Vietnamese

AgSafe



Android



iPhone



WorkWell is a FREE multilingual mobile app designed to support agricultural workers in Canada by improving their health, safety, and job awareness.

Key Features & Benefits for **Workers**

- ✓ Bite-Sized Safety Courses
- ✓ Interactive Quizzes
- ✓ Calendar functions
- ✓ Essential Contacts

Funding By



Funded by the
Government
of Canada



1-877-533-1789 | AgSafeBC.ca



Four Rivers

Four Rivers Co-op

188 E Stewart St, Vanderhoof BC

WWW.FOURRIVERSCO-OP.CRS



100% CANADIAN



DOWNLOAD THE APP



ALL YOUR AGRO NEEDS

TWO CONVENIENT LOCATIONS



VANDERHOOF AGRO CENTRE

1055 Highway 16 West
(250) 567-4225

Crop Protection • Fertilizer • Seed
Livestock Products



VANDERHOOF HOME CENTRE

250 E Stewart Street
(250) 567-4464

Building Supplies • Animal Feed
Animal Care Products • Hardware

Built for producers. Visit our Vanderhoof Agro Centre for dependable AG solutions, and our Home Centre for livestock feed, animal supplies, and bedding essentials.

Everything you need to support your operation, all in one place.





101 VALLEE CREEK PEN OF 3 HEIFERS

Commercial Simmental x Angus

BW	WW	YW	CE	BW	WW	YW	MK	CW	REA	MARB
-	-	-	-	-	-	-	-	-	-	-

SIRE COMMERCIAL
COMMERCIAL
COMMERCIAL

DAM COMMERCIAL
COMMERCIAL
COMMERCIAL

3 attractive, feminine and clean made red Sim Angus cross replacement females out of super easy fleshing cows. They will have the frame, and volume to be high performing females coming from cows with beautiful udders and strong maternal traits - the type that will have it all with the genetics behind them.



102 DG CATTLE CO. PEN OF 3 HEIFERS

Commercial Angus

BW	WW	YW	CE	BW	WW	YW	MK	CW	REA	MARB
-	-	-	-	-	-	-	-	-	-	-

SIRE COMMERCIAL
COMMERCIAL
COMMERCIAL

DAM COMMERCIAL
COMMERCIAL
COMMERCIAL

3 black Angus yearling heifers out of proven black Angus cows and by a quality Black Angus bull. Their dams have good feet and udders and are excellent mothers.



103 HOLMES RIVER RANCH PEN OF 3 HEIFERS

Commercial Gelbvieh x Angus

BW	WW	YW	CE	BW	WW	YW	MK	CW	REA	MARB
-	-	-	-	-	-	-	-	-	-	-

SIRE COMMERCIAL
COMMERCIAL
COMMERCIAL

DAM COMMERCIAL
COMMERCIAL
COMMERCIAL

These Gelbvieh X Angus heifers are sure to make a great addition to any herd. Handpicked out of the top 25% of our replacements with maternal traits and longevity in mind. They will grow to have a moderate frame with a tight udder and exceptional mothering ability.

AS EASY AS THAT!

SIMMENTAL

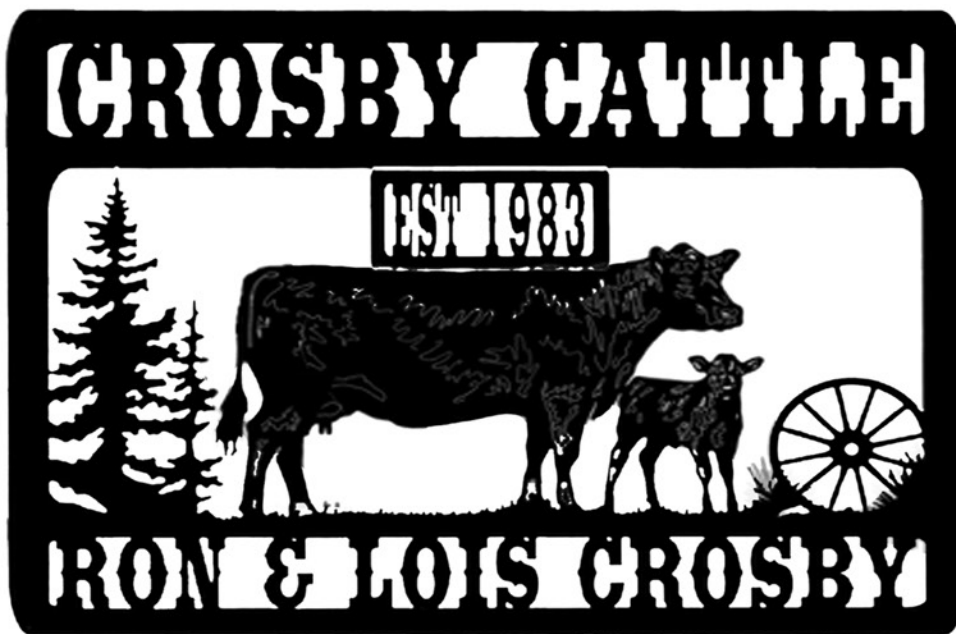
meeting the needs of today's beef industry with
calving ease, performance, maternal
and carcass quality all in one



SIMMENTAL
ASSOCIATION *of B.C.*



Chet Jans - President - (250) 219-8200
Leanna Mitchell - VP & Secretary - (250) 318-5245
To become a member please contact simmentalbc@gmail.com



Welcome and thank you for taking the time to look through our consignments to the 51st Annual Vanderhoof Bull Sale. 2026 will mark the 41st year that Crosby Cattle has consigned to this great event.

Lois and I firmly believe in the Simmental breed, both purebred and crossbred; the Simmental steers can compete with any of the continental breeds and the female side of the breed is exceptional.

We believe that over the 40+ years of breeding Simmental cattle we have concentrated on building a solid maternal base and is still our focus today. Genetics have changed over the years and we try to take advantage of the changes that we feel will benefit our herd... and yours.



"We have been using Ron and Lois' Simmental bulls for 30 plus years. Our cow herd and weaning weights have done nothing but get stronger through those years. Thanks to the Crosbys for these powerful bulls."

Steiner Family - Nithi Mountain Ranch

14948 Braeside Rd, Vanderhoof BC, V0J 3A2

Cell: 250-567-0521 Home: 250-567-4127

Email: ronloiscrosby@gmail.com



104 XBAR TYCOON 35N

Simmental | 1508660 | XBE 35N | Feb 14 '25 | Homo Polled

BW	WW	YW	CE	BW	WW	YW	MK	CW	REA	MARB
100	806	1273	5.5	4.8	76.5	109.6	29.1	19.7	0.83	-0.13

SIRE SVS TYCOON 841F
DUNK TYCOON 620J
 KHG LYNNETTE 150A

DAM BIG HILLS CLASSIFIED 449F
BIG HILLS MISS CLASSIFIED 761J
 BIG HILLS RED LADY 389W

35N is very attractive with his wavy dark red hair and wide white blaze, but more important than that he is broad topped and wide based, he is thick and deep in his rear quarter. His sire, DUNK Tycoon 620J, has been a valuable genetic addition to our program. His bull calves have been very well received and the females will become an important part of the cow herd for years to come. As a real bonus, 35N has tested **Homo Polled**.



105 XBAR COPPERHEAD 41N

Simmental | 1508676 | XBE 41N | Feb 17 '25 | Homo Polled

BW	WW	YW	CE	BW	WW	YW	MK	CW	REA	MARB
94	792	1254	7.2	2.5	82.2	123.4	22.0	34.4	0.89	-0.05

SIRE SAS COPPERHEAD G354
RJY COPPER 36J
 RJY CALIFORNIA GIRL 6E

DAM BOGARTS POLLED FUNKY 41F
XBAR MISS SHENA 5J
 TATSHENSHINI 149X

He has been a pen favorite by many who have toured the bull pen this winter. He displays a lot of desired Simmental characteristics, being strong topped, big ribbed and very correct in overall structure. He has a wide blaze with a wrap around goggle on one side. You will not have to deal with horns on any of his calves, as he has tested **Homo Polled**.



106 XBAR COPPERHEAD 44N

Simmental | 1508604 | XBE 44N | Feb 21 '25 | Polled

BW	WW	YW	CE	BW	WW	YW	MK	CW	REA	MARB
93	814	1321	7.0	2.5	81.6	117.1	25.3	30.3	0.97	0.00

SIRE SAS COPPERHEAD G354
RJY COPPER 36J
 RJY CALIFORNIA GIRL 6E

DAM DFM MARCUS 14M
XBAR MISS ZOWIE 17B
 XBAR ZOWIE 6Z

44N is solid red right down to the tips of his toes. He is very keen headed with good neck extension into his shoulders, which are tucked in very narrow. If his calves are built similar to him, they will be born easy and grow like weeds. For a bull with such a smooth front end, he is wide topped and deep quartered, very soft made, early maturing. His 11 year old dam was always a top producing cow with several heifers being retained in our program and bulls working in commercial herds.

RED IRON



POWERFUL GENETICS. PRACTICAL CATTLE.

BREEDING SIMMENTAL CATTLE WITH THE GROWTH, STRUCTURE, AND MATERNAL STRENGTH
NEEDED TO PERFORM IN COMMERCIAL OPERATIONS.



Thank you to all of our past bidders and buyers. We are excited to be bringing a dependable group of bulls carefully selected from our herd. We focus heavily on improving calving ease while continuing to add higher weaning weights and growth to your calves. We are sure to select cattle with top quality feet and udders. Our bulls are bred, fed and raised to last you for the long term. Contact us for a tour of the cows or to talk cattle.

-Brock and Brittanie

RED IRON SIMMENTALS

BROCK & BRITTANIE YOUNG
VANDERHOOF, BC | 250-570-2535 | BBCATTLE2@YAHOO.CA



107 RED IRON MAGNUM 496M

Simmental | 1535694 | RIS 496M | Dec 27 '24 | Horned

BW	WW	YW	CE	BW	WW	YW	MK	CW	REA	MARB
90	940	-	6.2	4.3	74.4	101.5	36.5	26.6	0.88	-0.15

SIRE ALLM COLOSSAL 25U
FGAF MAGNUM 901Z
VIRGINIAS UPTOWNGAL

DAM NAC BATTLE CRY 4F
BLACK GOLD MS KRYSY 85K
BLACK GOLD MS KRYSY 183H

Horned Fleckvieh

Pen heavyweight at weaning at 940 lbs, Red Iron Magnum brings real performance in a moderate, practical package. AI sired by FGAF Magnum and backed by a proven cow family with his dam tracing to NAC Battle Cry, he offers strong maternal value and predictable genetics. Structurally sound with a quiet, easy-to-handle disposition, this is a bull built to work and last. A solid choice for producers looking to add growth, reliability, and usability to their program.



108 RED IRON MAVERICK 497M

Simmental | 1535697 | RIS 497M | Dec 28 '24 | Polled

BW	WW	YW	CE	BW	WW	YW	MK	CW	REA	MARB
79	878	-	12.0	2.0	78.8	111.6	36.8	37.0	1.02	-0.14

SIRE ANCHOR D RAPTOR 392C
BILJ POL JAMIE 31J
SIBELLE ABEL 31F

DAM BLACK GOLD BATTLE CRY 115J
RED IRON LAFFYTAFFY
WJS MS FRANK 150J

Polled Fleckvieh

AI sired by BILJ Pol Jamie, Red Iron Maverick combines easy calving with excellent growth, a solid thick hair coat - Out of a first-calf heifer, he weaned at 878 lbs and is supported by good calving-ease EPDs. Dark red and double goggled, he's backed by a home-raised dam sired by our Battle Cry son "Pote," noted for sound feet and excellent udder quality.



109 RED IRON GENESIS 498M

Simmental | 1535693 | RIS 498M | Dec 31 '24 | Polled

BW	WW	YW	CE	BW	WW	YW	MK	CW	REA	MARB
92	890	-	7.3	5.7	82.3	115.1	34.3	27.9	1.08	-0.13

SIRE RENDEZVOUS GOVERNOR 4G
BROOK'S KEROSINE 14K
BROOK'S FLASH 84F

DAM FGAF ELECTRIC AVENUE 140E
BLL SIERRA 242K
BEE FIERRA 474B

Polled Fleckvieh

A Brooks Kerosine son, Red Iron Genesis offers balanced performance and maternal backing. He weaned at 890 lbs and is out of an excellent dam purchased from BLL in Bentley AB, adding proven program genetics. A brother is currently working in Central Alberta, making Genesis a reliable, consistent choice.





110 RED IRON SHOOT TO THRILL 502N

Simmental | 1537540 | RIS 502N | Jan 02 '25 | Polled

BW	WW	YW	CE	BW	WW	YW	MK	CW	REA	MARB
101	875	-	12.2	1.1	60.9	82.5	34.0	24.2	0.90	-0.50

SIRE RENDEZVOUS 33J
BLL THRILLER 339L
 BLL CLEO 03H

DAM BLACK GOLD BATTLE CRY 115J
RED IRON LACEY
 WJS MS GURRERO 115J

Red Polled Purebred

(Nigel) A first calf out of a home-raised heifer with impressive performance. Sired by a homo polled pure bred and dam a fullblood- a daughter of our Pote' herd bull , he brings tremendous growth and muscling while remaining easy doing and easy going. Blaze faced with very good feet and structure, this is a well-balanced, efficient young bull built to work. Actual weaning weight of 875lbs.



111 RED IRON SUPER DUTY 505N

Simmental | 1535701 | RIS 505N | Jan 06 '25 | Polled

BW	WW	YW	CE	BW	WW	YW	MK	CW	REA	MARB
103	980	-	9.7	4.4	75.3	104.1	33.6	20.9	0.84	-0.06

SIRE RENDEZVOUS GOVERNOR 4G
BROOK'S KEROSINE 14K
 BROOK'S FLASH 84F

DAM BRANDBERG
SIMMERON HETTY 18H
 SIMMERON FAWN 11F

Polled Fleckvieh

Homo polled by pedigree (test pending), Red Iron Super Duty posted an impressive 980 lb weaning weight. He comes From a larger-framed cow family with great udder and milk qualities. He's built to add length, power, and performance. A bull designed to produce pounds and profitable steer and heifer calves.



112 RED IRON GLADIATOR 512N

Simmental | 1535711 | RIS 512N | Jan 10 '25 | Polled

BW	WW	YW	CE	BW	WW	YW	MK	CW	REA	MARB
101	878	-	11.6	4.1	75.8	105.0	33.0	20.0	0.84	-0.06

SIRE RENDEZVOUS GOVERNOR 4G
BROOK'S KEROSINE 14K
 BROOK'S FLASH 84F

DAM FGAF PASSPORT 125B
SIMMERON FAWN 11F
 SIMMERON ANABEL 12A

Scurred / Polled Fleckvieh

From the same strong cow family as 505N, Red Iron Gladiator is very dark red, long-spined, and built for added weight and performance. His dam features perfect feet and udder quality, with four sisters retained in our herd. An easy-calving bull with EPDs to prove it, backed by maternal depth and consistency.

113 RED IRON ALKATRAZ 517N

Simmental | 1535704 | RIS 517N | Jan 15 '25 | Polled

BW	WW	YW	CE	BW	WW	YW	MK	CW	REA	MARB
98	884	-	11.1	3.8	74.1	102.9	36.4	19.9	0.84	-0.11

SIRE RENDEZVOUS GOVERNOR 4G
 BROOK'S KEROSINE 14K
 BROOK'S FLASH 84F

DAM SIMMERON MR ROYAL 3R
 SIMMERON GALENA 1G
 CROSSROAD YALLISON 360Y

Polled Fleckvieh

A Blood Red Kerosine son with true herd bull presence, Red Iron Alkatraz combines performance and maternal strength. He weaned at 884 lbs and traces back to Simmeron Mr Royal on the maternal side - proven female maker. A brother is working at Silver Summit Ranch, with a retained sister in herd awaiting her first calf.



114 RED IRON NAZARETH 516N

Simmental | 1535708 | RIS 516N | Feb 17 '25 | Scurs

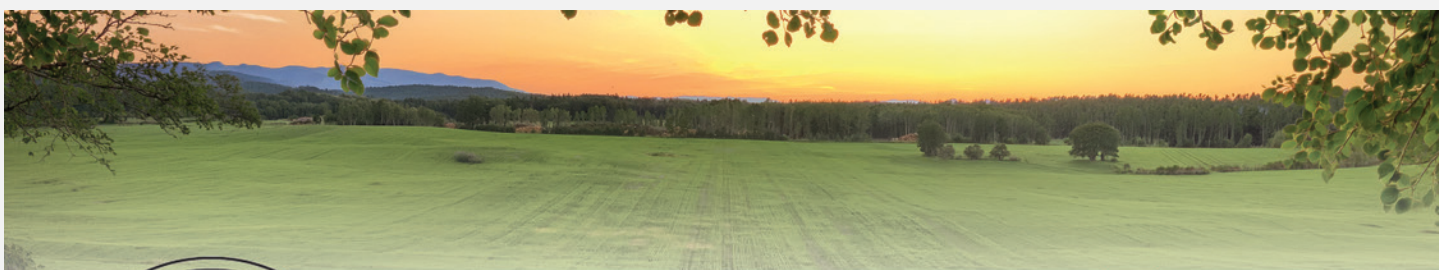
BW	WW	YW	CE	BW	WW	YW	MK	CW	REA	MARB
88	774	-	9.6	4.3	72.7	102.9	37.8	26.0	0.96	-0.08

SIRE RENDEZVOUS GOVERNOR 4G
 BROOK'S KEROSINE 14K
 BROOK'S FLASH 84F

DAM SBV REPUTATION 707F
 BLACK GOLD MS CARRIE 145K
 MS BGS CARRIE 36Z

Scurred Polled Fleckvieh

One of the younger calves in the offering, Red Iron Nazareth still weaned at 774 lbs. He's backed by a cow purchased from Black Gold, bringing calving ease and lighter birthweight genetics. Excellent disposition and built to work, making him a practical option for calving-focused programs.



NEW FOR 2026 • DLF FORAGE DEALER  **DLF**

• CROP CONSULTING • SOIL NUTRIENT RECOMMENDATIONS • AG COACHING SERVICES • FIELD SCOUTING • SOIL & PLANT TISSUE SAMPLING • DIGITAL SOIL MAPPING (SOIL OPTIX) • VARIABLE RATE FERTILIZER PRESCRIPTIONS • SATELLITE IMAGERY ON DEMAND

NORM DUECK LLaG, CCA
 Vanderhoof, BC
CELL: 250-570-1798 EMAIL: heartland.dueck@gmail.com

HOUSTON, BC
**VALLEE CREEK
 HEREFORDS**

HALEY & JAIME BELL EST. 1948
 250-845-4375 | haleybell20@yahoo.com



Replacements Females
 Range Ready Bulls
 4-H prospects
 Feeder Steers
 Available Ranch Direct



115 VCH FRONTLINE KEYNOTE 11M

Hereford | C03114963 | NOAH 11M | Apr 07 '24 | Scurs

BW	WW	YW	CE	BW	WW	YW	MK	CW	REA	MARB
100	880		-5.9	9.0	57.2	97.6	19.8	57.3	0.20	-0.01

SIRE FE 33B EASY LADDY 250F
 VCH KEYNOTE LADDY 23J
 FE 61C KEYNOTE 293G

DAM SUNNYBRAE RIBSTON 17F
 VCH MISS FRONTLINE RIBSTONE 2K
 VCH MISS FRONTLINE DOLL 21G

A Keynote son with the length, depth and frame that has set him apart from day one - which will come through in his offspring. From a proven longevity cow family that produces top replacement females year after year. This dark cherry red bull has the style and eye appeal that will consistently benefit any program and add pounds on sale day.

BETTER YOUR BEEF HEREFORD

YELLOWHEAD HEREFORD BREEDERS' ASSOCIATION

Efficiency - Longevity - Docility - Hybrid Vigor
SHOP LOCAL!

CONTACT US FOR RANCH DIRECT PURCHASES



Brackendale, BC	Nordic Herefords	604-898-3072	hghalv@shaw.ca
Burns Lake, BC	Cheslatta Cattle	250-570-8620	kaimigiesbrecht@yahoo.com
Fort St. John, BC	Ardill's Ranch	250-262-0184	ardillsranch@xplornet.com
Fraser Lake, BC	Copper-T Ranch	250-699-6466	coppertranch@outlook.com
Fraser Lake, BC	Lloyd's Cattle Co.	250-699-1406	lloydsc@outlook.com
Houston, BC	Vallee Creek Herefords	250-845-4375	haleybell20@yahoo.com
Knutsford, BC	Ogilvie Stock Farm	250-318-3753	ogilviestockranch@outlook.com
Little Fort, BC	Little Fort Herefords	403-385-8935	kymjim@shaw.ca
Prince George, BC	Norske Farm	250-981-5024	jhconstruction@shaw.ca
Quesnel, BC	Morley Polled Herefords	250-249-5346	brmorley77@gmail.com
Tlell, BC	Richardson Ranch	250-577-4348	don@richardsonranch.ca
Topley, BC	C-Jay Herefords	250-845-8611	wally_b@yahoo.com
Vanderhoof, BC	Pyj Ranch	250-567-6808	pyys85@gmail.com
Vanderhoof, BC	Sinkut Creek Ranch	250-567-7350	scranch92@gmail.com

Honorary Members: Jack & Nell Welch, Vanderhoof, BC Elsie Brigden, Quesnel, BC

Green Mobile Veterinary Services

Dr. Jodyne Green
DVM/Practice Owner

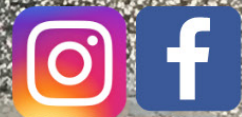


250.640.3784

829-5th Ave, Prince George, BC

Emergency Services Available

**Equine-Livestock-Ruminants-Pets
Haul-In & On-Farm Services
Herd Health/Repro Services
Surgery/Digital X-Ray/Ultrasound
Farm Supplies/Medications
Surgery/Vaccinations
www.greenmobileveterinary.ca**





No broken fences. No busted gates. No injured people.
*Herefords lead the way when it comes to the
"silent traits" and increase profitability
by more than \$51 per cow per year at the same time.*

7%

Higher pregnancy rates

\$51

More Per Cow, Per Year

\$20

Advantage in Feed Efficiency

\$30

Advantage in Feedlot Profitability

*Compared to Angus-sired calves. Source: Daley, David A. and Early, Sean P.

Impacts of Crossbreeding on Profitability in Vertically Coordinated Beef Industry Marketing Systems. American Hereford Association

**BETTER
YOUR BEEF
HEREFORD**

BCHA President

Kym Jim

403-358-8935

BCHA Secretary

Janice Tapp

250-699-6466



SINKUT CREEK

Polled Herefords



Farm visits welcome

CONTACT CARSTEN & SUE CHRISTENSEN

(PH) 250-567-9430 (CELL) 250-567-7350

116 SINKUT CREEK NOLAN 2N

Hereford | C03130288 | SCRC 2N | Jan 18 '25 | Polled

BW	WW	YW	CE	BW	WW	YW	MK	CW	REA	MARB
86	886	-	5.4	1.4	39.4	62.2	28.4	51.5	0.43	0.17

SIRE HARVIE HIGH ROAD 146G
KAS KRAMER 19H 15K
 KAS HERA 24E 19H

DAM REMITALL-W FULL HOUSE 45D
3-D-L ABBEY 6G
 3-D-L ABBEY 15E

An excellent bull for any operation whether purebred or commercial cross for baldy calves. Long thick and smooth for calving ease with an 86 lb BW. His dam is a foundation cow from 3DL polled Herefords. His sire has a Harvie Ranching background. He is well put together with good legs and feet weaning at 886lbs



117 SINKUT CREEK NILS 3N

Hereford | C03130289 | SCRC 3N | Jan 24 '25 | Polled

BW	WW	YW	CE	BW	WW	YW	MK	CW	REA	MARB
82	968	-	5.2	2.2	41.2	63.4	23.2	53.6	0.49	-0.20

SIRE HARVIE HIGH ROAD 146G
KAS KRAMER 19H 15K
 KAS HERA 24E 19H

DAM HAROLDSON'S TOTEM 200Z 5D
NCX HOLLY 72H
 NCX 28T WILMA 6W

He is a great well put together bull you can use on heifers and the whole herd with his low BW of 82lbs. His Dam is from the NCX polled Herefords program and their Totem Bull. He is dark red, long thick and deep with good feet and legs. His weaning weight of 968lbs will definitely put lbs on your calves.



Ready for tomorrow.

Risk & Insurance | Employee Benefits | Retirement & Private Wealth



HUB

HUB International Insurance Brokers

Bonny Currie, Branch Manager
 Unit 5, Co-op Mall, 188 E. Stewart St. PO Box 2180
 Vanderhoof, BC V0J 3A0
 Office: 250-567-2231 • Cell: 250-208-1690
 Email: bonny.currie@hubinternational.com
hubinternational.com

CROOKED CREEK RANCH

MATT & BARB MAZEREEUW

250-567-8137 / 250-570-9478

7605 Edwards Road, Box 2825, Vanderhoof, BC



PROUDLY PRODUCING QUALITY GELBIEH BULLS IN THE HEART OF BC!

*WHOLE HERD DNA TESTED
FREE LOCAL DELIVERY
ONLINE BIDDING AVAILABLE*

D | L | M | S
Direct Livestock Marketing Systems

119 MAZ NED 58N

Gelbvieh | CDGV191331 | MAZ 58N | Feb 16 '25 | Homo Polled

BW	WW	YW	CE	BW	WW	YW	MK	CW	REA	MARB
94	842	1116	8.0	3.3	70.0	98.0	23.0	53.0	0.69	-0.10

SIRE FLR HERCULES 6H
MAZ KAOS 2K
 BRM ADEL 720E

DAM RWG YOUR-TURN 1619
BRM 405B
 VG VALLEY MISS 69M

This bull has a dark red, thick coat for our northern winters. He is long and should bring some impressive calves to the sale barn. Stayability!!! Dam still has great feet and udder, with this being her 9th calf.



120 MAZ NELSON 59N

Gelbvieh | CDGV191329 | MAZ 59N | Feb 21 '25 | Homo Polled

BW	WW	YW	CE	BW	WW	YW	MK	CW	REA	MARB
71	731	981	15.0	-0.6	59.0	87.0	23.0	36.0	0.73	-0.09

SIRE FLR HERCULES 6H
MAZ KAOS 2K
 BRM ADEL 720E

DAM BRM COPPER 016H
BRM KHLOE 285K
 BRM CARRIE 713E

A lighter colored, thick coated, later born calf here with his DNA results highlighting calving ease. 71 lb birthweight, great feet and homo polled. Dam is a farm favorite.



Dianne Gyllich
BC Beef Rep
250-983-2213
dgyllich@selectsires.ca



ESTROTECT™
BREEDING INDICATOR

YOUR SUCCESS *Our Passion.*



We offer quality Gelbvieh genetics with a focus on maternal traits, good disposition, and sound feet.

BULLS AVAILABLE PRIVATE TREATY



HRR 1K



GAC H35



TMK 10K



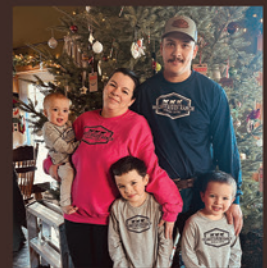
TMK 20L



HOLMES RIVER RANCH

McBride, BC | The Vogel Family

Ph: 250-569-7968 | Email: vog01@hotmail.com



121 HOLMES RIVER RANCH NUGGET 7N

Gelbvieh | CDGV191895 | HRR 7N | Apr 10 '25 | Scurs

BW	WW	YW	CE	BW	WW	YW	MK	CW	REA	MARB
93	888	-	14.0	-0.4	69.0	100.0	23.0	40.0	0.49	0.16

SIRE HILLSDOWN HAMILTON 10H
HOLMES RIVER KASH 1K
 AKS HERTHA

DAM JAB GUNNER
TMK HILLTOP MISS LUCY 20L
 TVR MISS FUNTIME 2 THE FUN

Nugget is an all-around impressive bull out of a 1st time dam. He brings performance, calving ease (top 20%), and maternal traits all in one package. His calves are sure to impress with their exceptional length and growth potential. Build your herd or sale-topping calves from this power house. No matter your breeding program, this bull will work for you! Has scurs.



122 HOLMES RIVER RANCH NITRO 8N

Gelbvieh | CDGV191896 | HRR 8N | Apr 12 '25 | Homo Polled

BW	WW	YW	CE	BW	WW	YW	MK	CW	REA	MARB
99	779	-	11.0	0.5	60.0	80.0	17.0	22.0	0.52	0.21

SIRE DAVIDSON HANK 152C
GAC HARLEY H35
 AFL DELTA

DAM BLB GOODVIEW PLD DEVON
TMK SWEET KLEMENTINE 10K
 BJS TRIPLE S HAVANA 46H

Nitro comes from an excellent 4-year-old dam, representing a strong line of cattle with maternal traits, performance, and calving ease. He is well put together; smooth, stout, and long with good feet and legs. Build nice moderate framed cows with tight udders or impressive feeder calves. Either way this cow-maker bull is sure to be a good investment in your herd.





TK Cattle Company

Registered Charolais

Reference Sire
Wrangler Bart 111G



BWT: 92 WWT:820 YWT: 1053

Tate & Kolby Page
Vanderhoof, B.C.
tkcattlecompany@gmail.com
Cell: (250) 944-0415
Cell: (250) 944-0264

Bulls For Sale Private
Treaty Off the Farm

51st Annual Vanderhoof All Breeds
Bull Sale
April 11, 2026

123 TKCC NON CHALANT 7N

Charolais | MC911951 | TKCC 7N | Jan 18 '25 | Polled

BW	WW	YW	CE	BW	WW	YW	MK	CW	REA	MARB
101	806	-	3.1	1.7	61.0	109.0	21.0	24.0	0.77	0.06

SIRE STEPLER OVERDRIVE 61B
WRANGLER BART 111G
 WRANGLER MS ELLY 116Z

DAM BRIMNER BULL 203A
TKCC FALLEN 12F
 ANCHOR WENDY 6W

TKCC 7N is a rugged, long-bodied bull with standout masculinity, a solid topline, and lots of hip. This bull combines balance, power, and eye appeal, making him an excellent choice for producers looking to add consistency and growth. His adjusted weaning weight was 806lbs.



124 TKCC NO WORRIES 9N

Charolais | MC911952 | TKCC 9N | Jan 22 '25 | Polled

BW	WW	YW	CE	BW	WW	YW	MK	CW	REA	MARB
102	733	-	1.9	2.1	63.0	117.0	13.0	27.0	0.81	0.03

SIRE STEPLER OVERDRIVE 61B
WRANGLER BART 111G
 WRANGLER MS ELLY 116Z

DAM MAIN LEDGER UP 4C
MAIN LEDGER UP 811F
 FVSF MS HOT MOROCCO 51D

TKCC 9N checks all the boxes—deep-made, structurally correct. He's been a stand out bull in the pen from the beginning with good feet and lots of heel. His full brother was the lead off bull in the Vanderhoof All Breeds Bull Sale last year. 9N is out of a very good deep-bodied 8 year old cow.



125 TKCC NORTH STAR 10N

Charolais | MC911953 | TKCC 10N | Jan 23 '25 | Polled

BW	WW	YW	CE	BW	WW	YW	MK	CW	REA	MARB
105	691	-	-0.5	3.3	59.0	108.0	12.0	21.0	0.68	0.05

SIRE STEPLER OVERDRIVE 61B
WRANGLER BART 111G
 WRANGLER MS ELLY 116Z

DAM MXS GLOBETROTTER 709E
TKCC GHOSTBUSTER 5G
 ANCHOR YOGA 20Y

TKCC 10N is a stocky, deep-bodied bull with a thick, powerful topline and excellent natural muscle. He has a large scrotal. 10N is built to add substance, width, and performance to a calf crop. He has a quiet disposition and is out of a 7 year old cow.





126 TKCC NO MISS 23N

Charolais | MC911955 | TKCC 23N | Feb 02 '25 | Polled

BW	WW	YW	CE	BW	WW	YW	MK	CW	REA	MARB
98	709	-	7.7	0.2	50.0	96.0	20.0	17.0	0.69	0.07

SIRE STEPLER OVERDRIVE 61B
 WRANGLER BART 111G
 WRANGLER MS ELLY 116Z

DAM WR WRANGLER W601
 TKCC GONE WITH THE WIND 8G
 TKCC ELDORADO 14E

TKCC 23N is an easy-doing bull with a clean, small head and attractive profile. He shows good neck extension and a smooth front end. This bull is built for efficiency while maintaining balance and correctness.



Ritchey Livestock tags in store

Engravable tags and Laser Engraving on site * Cattle Mineral & Supplements * Various Cattle and Horse supplies & feeds * Electrolytes * Suture kits
 Calving & IV Supplies * Calf Resuscitator
 SweetPro Dealer* Princeton Wood Preservers
 Dealer (Fence Posts & Rails)

** Afterhours **Emergency** supplies available**



HUBER

EQUIPMENT

FARM & CONSTRUCTION SOLUTIONS

You know us for our agriculture equipment. But did you know we have a large inventory of Kubota skid steers, wheel loaders and mini excavators that offer outstanding maneuverability and comfort, along with exceptional performance and durability?

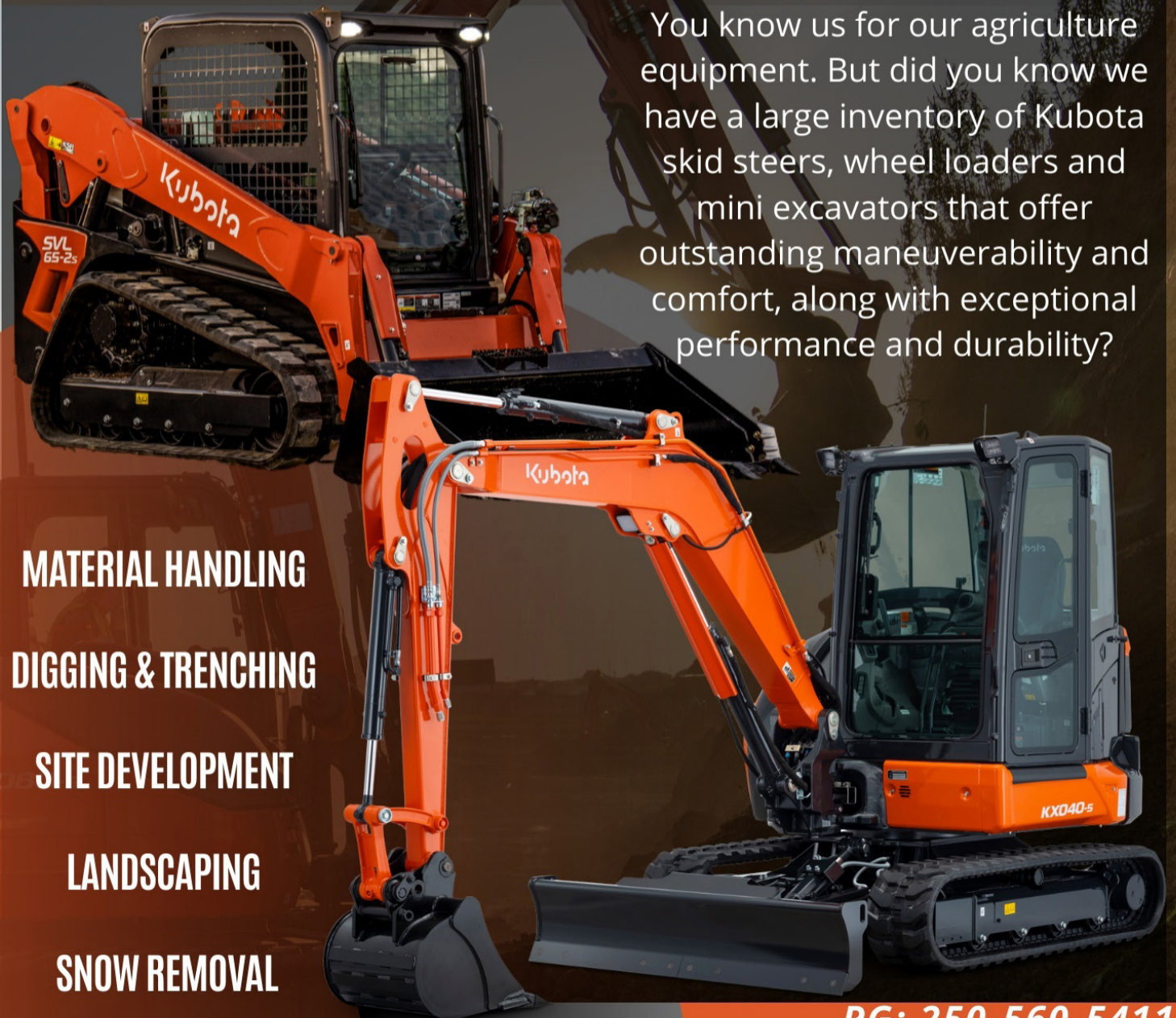
MATERIAL HANDLING

DIGGING & TRENCHING

SITE DEVELOPMENT

LANDSCAPING

SNOW REMOVAL



CONTACT US

PG: 250-560-5411

SMITHERS: 250-847-3610



WWW.SM

HOUSTON BC



M.PRV.CA

250-845-2244



SURE CROP FEEDS



SURE CROP FEEDS INC.

6863 Highway 97A North
Grindrod, BC V0E 1Y0

Phone: 1-250-838-6855

Toll Free 1-800-228-5491

Email orders to orderdesk@surecropfeeds.com

www.surecropfeeds.com

SERVING FARMERS SINCE 1957

Proud supporter of the British Columbia Beef Industry



CHARCOAL CREEK

CATTLE COMPANY

REGISTERED RED ANGUS
BULLS & FEMALES AVAILABLE

KYLE & JESSICA PRICE

6233 Nechako Pit Rd., Fort Fraser, BC

Cell: 250-896-1599 or 250-307-5866

charcoalcreekcattle@gmail.com



FOLLOW US FOR RANCH UPDATES





127 RED CHARCOAL NITRO 29N

Red Angus | 2412810 | KJCB 29N | Jan 15 '25 | Polled

BW	WW	YW	CE	BW	WW	YW	MK	CW	REA	MARB
87	789	1238	1.0	0.4	49.0	91.0	29.0	-	-	-

SIRE RED CIRCLE G GLINT 7G
 RED PACIFIC CHIVAS 66K
 RED PACIFIC MAY 40F

DAM RED STOUT BROS RED RIVER 22G
 RED BNK TARA KIPP 325K
 RED MAR MAC TARA 57E

A dark cherry red, early-maturing bull with ample scrotal development, tons of volume, and sound structure on dark feet. His dam breeds back early every year, and her calves consistently land in the keeper pen. Use him with confidence to build top-notch replacement heifers.



128 RED CHARCOAL NINETY PROOF 32N

Red Angus | 2412812 | KJCB 32N | Jan 28 '25 | Polled

BW	WW	YW	CE	BW	WW	YW	MK	CW	REA	MARB
84	735	1160	1.0	0.7	46.0	83.0	26.0	-	-	-

SIRE RED CIRCLE G GLINT 7G
 RED PACIFIC CHIVAS 66K
 RED PACIFIC MAY 40F

DAM RED LAZY MC BENELLI 102B
 RED RAFTER SJ MISS REBA 20L
 RED RAFTER SJ MISS REBA 60F

A nicely balanced and thick-right-through bull from a first-calf Rafter SJ heifer. Moderate birthweight with an abundance of hair and muscle on this easy keeping fellow.



129 RED CHARCOAL NOMAD 35N

Red Angus | 2438418 | KJCB 35N | Feb 07 '25 | Polled

BW	WW	YW	CE	BW	WW	YW	MK	CW	REA	MARB
97	795	1231	-2.0	1.4	48.0	89.0	31.0	-	-	-

SIRE RED CIRCLE G GLINT 7G
 RED PACIFIC CHIVAS 66K
 RED PACIFIC MAY 40F

DAM RED CIRCLE G GLINT 7G
 RED BNK KAYDEE 120K
 RED PACIFIC GOLD BRANDI 23H

Powerful ranching bull. This rascal's dam kept licking his ear protection off, but what he lacks in ears he more than makes up for in numbers. A great option for a terminal cross to produce high-performing feeders, or use him to sire big, stout replacement heifers.



130 RED CHARCOAL NAVIGATOR 36N

Red Angus | 2455971 | KJCB 36N | Feb 09 '25 | Polled

BW	WW	YW	CE	BW	WW	YW	MK	CW	REA	MARB
92	776	1213	-4.0	3.3	49.0	77.0	23.0	-	-	-

SIRE RED YCLC 7H BERETTA 142E
 RED LFE RA LEWIS BERETTA 3218K
 RED LFE RA DOLL 2148D

DAM RED TR OASIS 142Y
 RED YCR FANTASY 1575C
 RED YCR FANTASY 1334A

Outstanding, thick hair coat on this bull with jet-black feet and plenty of natural shape. His 12 year old dam has an excellent udder and produced numerous bulls and replacement heifers working across Alberta. Proven maternal strength and great stayability built in.

778-953-5551

WE DRIVE
365

NO DAYS OFF
 TRANSPORT LTD

DAILY
 VIDEOS



EQUIPMENT
 FARM SUPPLIES & HAY
 AUCTION ITEMS
 VEHICLES, TRUCKS AND MORE

More than taxes. Complete financial support for small businesses and farms.

Every year, FBC Members save **over \$42 million** through proactive tax planning and year-round guidance.



Start with a free 15-minute consultation.

You work hard to build your future. We here to help you protect and grow it.

EST. 2014



DG CATTLE CO.

REGISTERED RED & BLACK ANGUS
DANIEL & GEORGIA DYKSTRA

VANDERHOOF, BC

250-570-7866 OR 250-567-0780

D.GCATTLE@HOTMAIL.COM

We are proud to offer three yearling heifers and three yearling bulls at the 2026 Vanderhoof All Breeds Bull Sale.

- Hay & Grain Sales
- Custom Haying & Tillage
- Bulls, Replacement Heifers & Replacement Cow/Calf Pairs

BRANDED WITH PRIDE -- CATTLE WE STAND BEHIND.

131 RED DG NOSTRADAMUS 80N

Red Angus | 2426682 | DG 80N | Feb 03 '25 | Polled

BW	WW	YW	CE	BW	WW	YW	MK	CW	REA	MARB
79	578	1015	5.0	0.3	30.0	60.0	20.0	-	-	-

SIRE RED PIE CINCH 4126
RED MOON LONGMIRE 35L
 RED MOON TESS 53H

DAM RED B V POSITIVE 9A
RED TRITT HIGH NOON 38D
 RED TRITT HIGH NOON 15W

80N is a solid red bull with a 79lb birthweight and was 712lbs on weaning day. His dam is 10 years old with good feet and udder.



132 RED DG NACHO 81N

Red Angus | 2426681 | DG 81N | Feb 17 '25 | Polled

BW	WW	YW	CE	BW	WW	YW	MK	CW	REA	MARB
79	625	981	6.0	-0.1	32.0	54.0	22.0	-	-	-

SIRE RED PIE CINCH 4126
RED MOON LONGMIRE 35L
 RED MOON TESS 53H

DAM RED B V POSITIVE 9A
RED TRITT NOON 32C
 RED TRITT NOON 23S

81N is a long bodied, well balanced bull. His dam is 11 years old and still a top producer in our herd.



133 DG NOTORIOUS 82N

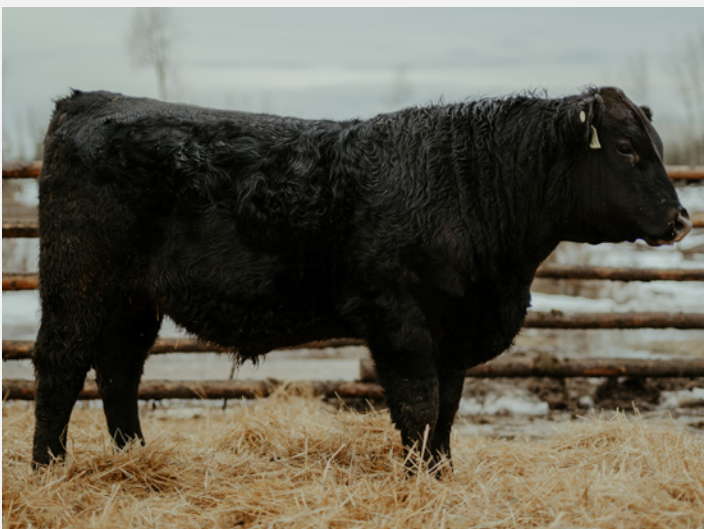
Black Angus | 2426686 | DG 82N | Mar 12 '25 | Polled

BW	WW	YW	CE	BW	WW	YW	MK	CW	REA	MARB
86	722	1064	3.0	1.5	47.0	82.0	30.0	-	-	-

SIRE G A R SURE FIRE
MARBERLY LEROY 17L
 MARBERLY TIBBIE 25G

DAM MARBERLY GLACIER 19G
DG JOLLY 103J
 RED TRITT'S NOON 23X

82N is an attractive bull with impressive growth. He has good feet and is easy to handle.





[J&R] RANCH

WHERE TOUGH COUNTRY
BUILDS BETTER CATTLE.
ANGUS CATTLE RAISED IN RANCH COUNTRY

[J&R]
RANCH

JACKIE & RON GROOT
HOUSTON, BC | 250-845-4878

134 OVER TIME SPECIALIST 181N

Black Angus | 2431054 | OTGR 181N | Jan 25 '25 | Polled

BW	WW	YW	CE	BW	WW	YW	MK	CW	REA	MARB
87	782	-	3.0	1.3	56.0	100.0	31.0	38.0	0.33	0.69

SIRE BALDRIDGE 38 SPECIAL
MOGCK SPECIALIST 98
MOGCK RUTH 1686

DAM MUSGRAVE AVIATOR
PM TIBBIE 181'16
POPLAR MEADOWS TIBBIE 6'11

181N is coming from one of our best cows, purchased from Poplar Meadows Angus. A powerhouse dam who passed her feet quality onto this guy. This growthy Specialist son has a moderate B.W. and impressive W.W. Solid muscled, great fronted, with plenty of thickness. 181 is easy to deal with as he is halter broke.



135 OVER TIME BLACKBIRD 10N

Black Angus | 2446542 | OTGR 10N | Feb 13 '25 | Polled

BW	WW	YW	CE	BW	WW	YW	MK	CW	REA	MARB
70	790		7.0	0.1	54.0	94.0	29.0	-	-	-

SIRE S A V FINAL ANSWER 0035
MARBERLY JACKSON 14J
MARBERLY IDELETTE 18C

DAM PEAK DOT NO DOUBT 25D
BLAST BLACKBIRD 10G
BLAST BLACKBIRD 19B

A heifer safe option out of our Blast Blackbird cow. His dam has been an excellent producer raising a top end calf every year. This thick made bull is smooth through his shoulder, square over his top, and structurally sound. 10N has an impressive W.W. for immediate impact on your herd's growth.



Dykstra Farm Services

Daniel & Georgia Dykstra
250-570-7866

dfarmservices@hotmail.com

PO Box: 956
Vanderhoof, BC
VOJ 3A0

Specializing in agricultural repairs & service.

KN FARMS

BLACK ANGUS CATTLE
250-567-5609

THANK YOU TO ALL OF OUR PAST BUYERS



KNF 50N



KNF 51N



KNF 52N



KNF 53N



KNF 54N



KNF 55N



KNF 56N

We purchased our first purebred Black Angus in 2010 and since then we've been improving and growing our genetic base. We select for structural soundness, milking ability, fleshing ability, fertility and rate of gain. We also take pride in our halterbroke bulls. Be sure to give us a call if you have any questions, we're more than happy to chat cattle!

KN FARMS

Kevin & Nickie Thomson

13782 Mapes Rd. Vanderhoof, BC ■ 250-567-5609 ■ 250-567-8452 ■ knfarms3@gmail.com

136 KNF EASY DEPOSIT 50N

Black Angus | 2414732 | KNF 50N | Feb 04 '25 | Polled

BW	WW	YW	CE	BW	WW	YW	MK	CW	REA	MARB
80	836	-	7.0	1.7	56.0	99.0	25.0	-	-	-

SIRE BASIN SAFE DEPOSIT 9324
 KNF RFA 209T DEPOSIT 25L
 BANDURA MISS FOREVER LADY 48E

DAM KNF MCB DECISION 14F
 KNF EASY DUTCHESS 8L
 KNF DUTCHESS 6C

KNF Easy Deposit 50N is a powerful, long made and well put together bull with a ADG of 3.69lbs



137 KNF DIESEL DEPOSIT 51N

Black Angus | 2414733 | KNF 51N | Feb 17 '25 | Polled

BW	WW	YW	CE	BW	WW	YW	MK	CW	REA	MARB
74	795	-	11.0	-0.7	52.0	96.0	28.0	-	-	-

SIRE BASIN SAFE DEPOSIT 9324
 KNF RFA 209T DEPOSIT 25L
 BANDURA MISS FOREVER LADY 48E

DAM SIX MILE DIESEL 470H
 KNF 6B WEBIT 2L
 KNF WEBIT 6B SENSATION 4J

KNF Diesel Deposit 51N is a good looking, well balanced, stout made, wide based bull with a BW of 74lbs and ADG of 3.52lbs.



138 KNF ENHANCED DEFINITION 52N

Black Angus | 2432158 | KNF 52N | Mar 03 '25 | Polled

BW	WW	YW	CE	BW	WW	YW	MK	CW	REA	MARB
77	684	-	8.0	-0.4	53.0	91.0	23.0	-	-	-

SIRE CUDLOBE ENHANCE 104G
 KNF ENHANCE STIMULOUS 6J
 KNF ELSIE SENSATION 26G

DAM RED KUEBER POWER RANGER 62H
 KUEBER ROSEBUD 4K
 KUEBER ROSEBUD 4H

KNF Enhanced Definition 52N is a stout, deep bodied bull that is easy fleshing and backed by a strong producing cow family.





139 KNF SENSATION ELEMENT 53N

Black Angus | 2414734 | KNF 53N | Mar 05 '25 | Polled

BW	WW	YW	CE	BW	WW	YW	MK	CW	REA	MARB
83	841	-	7.0	-0.2	59.0	107.0	31.0	-	-	-

SIRE POSS ELEMENT 215
 MINBURN ELEMENT 27K
 MINBURN GAMMER 99H

DAM SITZ SENSATION 693A
 KNF WEBIT 6B SENSATION 4J
 KNF ERICA WEBIT 21G

KNF Sensation Element 53N has a moderate birth weight and big performance in a long package with a 3.70lb ADG.



140 KNF ELEMENT SENSATION 54N

Black Angus | 2414751 | KNF 54N | Mar 05 '25 | Polled

BW	WW	YW	CE	BW	WW	YW	MK	CW	REA	MARB
81	841	-	7.0	-0.2	59.0	107.0	31.0	-	-	-

SIRE POSS ELEMENT 215
 MINBURN ELEMENT 27K
 MINBURN GAMMER 99H

DAM SITZ SENSATION 693A
 KNF WEBIT 6B SENSATION 4J
 KNF ERICA WEBIT 21G

KNF Element Sensation 54N is an eye appealing, long spined, long hipped bull with a 3.71lb ADG.



141 KNF BIG SKY ELEMENT 55N

Black Angus | 2414735 | KNF 55N | Mar 07 '25 | Polled

BW	WW	YW	CE	BW	WW	YW	MK	CW	REA	MARB
87	732	-	7.0	-0.1	66.0	113.0	26.0	-	-	-

SIRE POSS ELEMENT 215
 MINBURN ELEMENT 27K
 MINBURN GAMMER 99H

DAM MUSGRAVE BIG SKY
 BANDURA MISS GREEN PRINCESS
 BANDURA MISS GREEN PRINCESS 9D

KNF Big Sky Element 55N is a bull that has frame and is a smooth, long made bull with a 3.15lb ADG.



142 KNF ELEMENT SESATION 56N

Black Angus | 2414736 | KNF 56N | Mar 11 '25 | Polled

BW	WW	YW	CE	BW	WW	YW	MK	CW	REA	MARB
88	833	-	10.0	-1.7	62.0	106.0	30.0	-	-	-

SIRE POSS ELEMENT 215
 MINBURN ELEMENT 27K
 MINBURN GAMMER 99H

DAM SITZ SENSATION 693A
 KNF DUTCHESS SENSATION 2J
 KNF DUTCHESS 2G

KNF Element Sensation 56N is a combination of performance and calving ease that will add growth and length with a 3.36lb ADG.



R

THE REID
HOTEL



The Reid Hotel

Providing modern and luxurious accomodations in Vanderhoof, BC.

To book feel free to call, email or visit our website.

Phone: 250.567.2316

Email: aread@thereidhotel.com

<http://www.thereidhotel.com>

SKARA BRAE ANGUS

LUDWIG FARMS



Backed by our 20 years of herd selection and genetics, we are bringing two spectacular yearling bulls to the sale.

Fed on the farm for moderate growth, performance and longevity.

We are happy to hear our bulls stay in your herds for many years.

The *Peak Dot For Sure* 3116J herd sire has amazing calving ease and calf vigor, often up and nursing in minutes.

We are pleased to retain a number of his heifers in the herd as well.

Frank and Miriam Ludwig
Vanderhoof, BC

250-567- 9466

250-567-8949

Peak Dot For Sure 3116J



Your success is our success!

Thank you to all our past and present buyers.

We appreciate your business and strive to provide you with great service and great bulls.

~ Frank and Miriam

Your Local Choice for Quality Black Angus Bulls

143 SKARA BRAE FOR SURE 251N

Black Angus | 2451262 | SBX 251N | Feb 05 '25 | Polled

BW	WW	YW	CE	BW	WW	YW	MK	CW	REA	MARB
76	-	-	3.0	0.9	48.0	77.0	27.0	-	-	-

SIRE PEAK DOT FOR SURE 385F
PEAK DOT FOR SURE 3116J
 PEAK DOT DUCHESS 3005G

DAM ATLASTA RIGHT TIME 124R-153Z
SKARA BRAE BLACKGOLD 29C
 SKARA BRAE BLACKGOLD 15W

We expect this young bull to be as easy-calving as his sire. On the maternal side, every cow has a story and stayed with us until aging out, going back to our first foundation cow. They are paired with some spectacular bulls we owned- Atlasta Right Time, and the great Skara Brae Tom Boy- this bull has got all the right genes for a spectacular herd sire for your outfit. He is straight, walks well, and has thickness in all the right places.



144 SKARA BRAE FOR SURE 256N

Black Angus | 2451265 | SBX 256N | Feb 23 '25 | Polled

BW	WW	YW	CE	BW	WW	YW	MK	CW	REA	MARB
82	-	-	3.0	1.9	52.0	101.0	24.0	-	-	-

SIRE PEAK DOT FOR SURE 385F
PEAK DOT FOR SURE 3116J
 PEAK DOT DUCHESS 3005G

DAM ATLASTA UPWARD 307R 25C
SKARA BRAE QUEEN 103F
 SKARA BRAE QUEEN 9A

Another easy calving young bull with an impeccable dam side to his pedigree, out of cows we have showed- Jackpot and cow/calf pair winners that confirm the true angus phenotype. He has great legs and feet and a very trim head. Another bull that we would love to see out in your pasture for the solid calves he will give you.



HIGH HAULIN'

— ANGUS —



BEHIND EVERY *GREAT* BULL STANDS AN *EXCEPTIONAL* COW.



HIGH HAULIN' ANGUS

JON VANDERMOOREN • Houston, BC • 250-845-4878 • jon_vdm@yahoo.com

145 HIGH HAULIN PROFOUND 14N

Black Angus | 2423978 | JDVM 14N | Jan 20 '25 | Polled

BW	WW	YW	CE	BW	WW	YW	MK	CW	REA	MARB
86	812	-	5.0	2.6	59.0	98.0	12.0	-	-	-

SIRE S POWERPOINT WS 5503
ELLINGSON PROFOUND 8155
 EA ROSETTA 6157

DAM CRESCENT CREEK 12Z CHISUM
MARBERLY HEATHER 11E
 MARBERLY HEATHER 17A

14N is out of my oldest cow Marberly Heather 11E. 14N is another good footed bull that walks out good. He would be best suited for the mature cows.



146 HIGH HAULIN NEWT 12N

Black Angus | 2423974 | JDVM 12N | Jan 28 '25 | Polled

BW	WW	YW	CE	BW	WW	YW	MK	CW	REA	MARB
82	785	-	6.0	1.1	50.0	86.0	25.0	-	-	-

SIRE S A V RENOVATION 6822
S A V JESSE JAMES 0968
 S A V BLACKCAP MAY 8961

DAM ATLASTA RAGE 88D
BLAST BLACKBIRD 39F
 BLAST BLACKBIRD 38C

12N was my grand champion calf last fall at the LDFF, along with his dam Blast Blackbird 39F. 12N is a nice, clean, well footed bull that will work good on heifers.



BVX BEEF PEN SHOW



OPEN TO ALL
BREEDS,
REGISTERED OR
COMMERCIAL

*\$250 ADDED
FOR GRAND
CHAMPION
FEMALE & BULL
- SPONSORED BY
BV CATTLEMEN
ASSOCIATION*

AUG 28 - 30TH 2026





WHERE BC WORKS, WE DELIVER



1473 HIGHWAY 16 EAST, VANDERHOOF, BC V0J3A0
PH: 250-567-4781 | WWW.WESTLINEFORD.COM

 Find us on Facebook!



North 40
Red Angus

MIKE & BRENDA WHEELER

Home: 250-567-4020

Cell: 250-567-0764

Email: north.40@live.ca

4694 Blackwater Road, Vanderhoof, BC



RED NORTH 40 SPECIALIST 45L



RED DWAJO MYSTICAL 1L

Featured Sires



OUR BULLS ARE BRED AND SELECTED FOR CALVING EASE, DISPOSITION, STRUCTURAL SOUNDNESS AND BALANCED GROWTH TRAITS. PRE-SALE VIEWING OF OUR BULL PEN IS WELCOMED AND WE ARE HAPPY TO ASSIST WITH BULL SELECTIONS PRIOR TO SALE DAY.

Visitors Welcome



147 RED NORTH 40 MYSTICAL 66N

Red Angus | 2412416 | MBW 66N | Feb 08 '25 | Polled

BW	WW	YW	CE	BW	WW	YW	MK	CW	REA	MARB
76	635	1059	8.0	-1.7	36.0	65.0	22.0	-	-	-

SIRE RED TR MISTICAL 548W
RED DWAJO MYSTICAL 1L
 RED DWAJO SUPERIOR 61J

DAM RED DURALTA TARGET 142C
RED NORTH 40 COPPER 711E
 RED NORTH 40 BRR COPPER 231Z

A moderate-framed bull that still shows a smooth, attractive front end with added depth of body and a deep middle. He is out of a very good, productive 8-year-old cow.



148 RED NORTH 40 MYSTICAL 67N

Red Angus | 2411317 | MBW 67N | Feb 03 '25 | Polled

BW	WW	YW	CE	BW	WW	YW	MK	CW	REA	MARB
71	690	1165	12.0	-3.2	45.0	82.0	24.0	-	-	-

SIRE RED TR MISTICAL 548W
RED DWAJO MYSTICAL 1L
 RED DWAJO SUPERIOR 61J

DAM RED PIE SPECIALIST 430
RED RCHR CASI 26J
 RED RCHR CASI 7G

A well-made bull with a strong, smooth top and good muscle. He is deep-bodied with a very good hip, a quiet disposition, and an attractive head.



149 NORTH 40 SPECIALIST 68N

Black Angus | 2411319 | MBW 68N | Feb 05 '25 | Polled

BW	WW	YW	CE	BW	WW	YW	MK	CW	REA	MARB
85	727	1183	4.0	0.1	43.0	72.0	25.0	-	-	-

SIRE RED WILBAR SPECIALIST 607H
RED NORTH 40 SPECIALIST 45L
 RED GRA-TAN BRIDGET 66J

DAM XO CROWFOOT 0102X
NORTH 40 COVERGIRL 477B
 RED CROWFOOT COVERGIRL 6X

A black-red carrier bull out of a productive 12-year-old black-red carrier cow that still maintains a perfect udder and excellent feet. He is a well-balanced but with a smooth front end and added thickness and depth where it counts. Adjusted 205-day weight of 727 lbs.





150 RED NORTH 40 SPECIALIST 69N

Red Angus | 2411320 | MBW 69N | Feb 08 '25 | Polled

BW	WW	YW	CE	BW	WW	YW	MK	CW	REA	MARB
88	674	1109	4.0	-0.3	40.0	74.0	26.0	-	-	-

SIRE RED WILBAR SPECIALIST 607H
RED NORTH 40 SPECIALIST 45L
 RED GRA-TAN BRIDGET 66J

DAM RED HAZEL BLUFF DAKOTA 31G
RED LONE STONE HONEY 29K
 RED LONE STONE HONEY 6H

A moderate-framed, smooth-made bull with added balance and eye appeal. He presents a good overall profile and is out of a good, productive 4-year-old cow.



151 RED NORTH 40 MAJESTIC 70N

Red Angus | 2411323 | MBW 70N | Feb 14 '25 | Polled

BW	WW	YW	CE	BW	WW	YW	MK	CW	REA	MARB
83	767	1211	7.0	-0.8	47.0	77.0	22.0	-	-	-

SIRE RED TR MISTICAL 548W
RED DWAJO MYSTICAL 1L
 RED DWAJO SUPERIOR 61J

DAM RED TER-RON GOLDEYE 36E
RED NORTH 40 RITA 055H
 RED NORTH 40 RITA 12Y

A well-balanced, herd sire-type bull combining calving ease with length, depth, and rib shape. Out of a productive 6-year-old cow known for an excellent disposition, he offers the kind of maternal strength and longevity that adds value to replacement females. Adjust 205-day weight: 767 lbs.



152 RED NORTH 40 MYSTICAL 72N

Red Angus | 2411325 | MBW 72N | Feb 24 '25 | Polled

BW	WW	YW	CE	BW	WW	YW	MK	CW	REA	MARB
82	774	1198	9.0	-2.2	45.0	76.0	22.0	-	-	-

SIRE RED TR MISTICAL 548W
RED DWAJO MYSTICAL 1L
 RED DWAJO SUPERIOR 61J

DAM RED TER-RON HORTON 158H
RED NORTH 40 ROSETTE 200K
 RED NORTH 40 ROSETTE 238Z

A moderate-framed bull with a good hip and a well-balanced profile. He is deep and long-bodied, combining balance with excellent calving ease EPDs.

153 RED NORTH 40 MAJESTIC 73N

Red Angus | 2411327 | MBW 73N | Mar 03 '25 | Polled

BW	WW	YW	CE	BW	WW	YW	MK	CW	REA	MARB
78	743	1176	8.0	-1.1	49.0	84.0	25.0	-	-	-

SIRE: RED TR MISTICAL 548W
RED DWAJO MYSTICAL 1L
 RED DWAJO SUPERIOR 61J

DAM: RED KBJ ROCK SOLID 979D
RED GRA-TAN PERFECTION 17J
 RED GRA-TAN LOU ANN 99C

A long, deep-bodied bull with a strong topline and added muscle on a moderate frame. He combines performance and calving ease, posting a light 79 lb birthweight and a 743 lb adjusted 205-day weight.



Terms & CONDITIONS

TERMS OF SALE:

1. Each consignor may place a reserve bid on his/her animal(s) if desired. Should this reserve not be topped the animal is passed out of the ring un-sold, and the consignor must pay the a commission on the reserve.
2. Every animal sells to the highest bidder and in the cases of disputes, the auctioneer's decision shall be final.
3. No release will be given until satisfactory settlement has been made.
4. Announcements from the auction block will take precedence over the printed matter in the catalogue.

SETTLEMENT OF PURCHASES:

5. All purchases must be settled by the end of the sale day by cash, cheque or electronic means at the sale office.
6. Immediately after a purchase is declared, the risk of the animal shall be exclusively with the purchaser. Insurance will be available on the premises.

CONDITIONS OF SALE:

7. All bulls are sold subject to all health requirements set by the Vanderhoof Bull Sale Committee. Bulls have passed examinations by a three person sifting committee on the day before the sale. An appointed veterinarian has final say in all health matters.
8. Consignors guarantee sale animals to be in sound health and free from physical defects, contagious or infectious diseases at the time of the sale.
9. Bulls have had a satisfactory semen test performed by a qualified veterinarian, not more than 45 days prior to the sale.
10. The consignor is not responsible for damage by foreign bodies after the animal is sold or for sickness or injury not apparent at sale time.
11. Each bull carries a certificate of registration issued by the pertinent breed association. Certificates of registration will be sent to the appropriate breed association for transfer of the certificate into purchaser's name.

GENERAL:

12. The Vanderhoof Bull Sale Committee reserves the right to decide any point not covered by the rules the committee considers necessary in the proper regulation and management of the sale. The decision of the committee shall be final in all cases. in attendance agree to these conditions and are bound thereby. All persons who attend the sale do so at their own risk and the Owners, Managers and Sale Staff assume no liability, legal or otherwise, for accidents or property loss that may occur. All Buyers, Bidders and those otherwise

-BC Livestock Producers Co-operative

HENKEL CREEK ANGUS

Francois Lake, B.C.



**We are proud to offer
4 Two-Year-Old
Registered Angus Bulls
at the
Vanderhoof All Breeds Bull Sale
Quality Bulls & Females
For Sale off The Ranch**

**Henkel Creek Angus
Glen & Denise Stewart
18220 Colleymount Road
Burns Lake, B.C.**

**ph. 250.695.6652
Glen cell 250.251.1176
Denise cell 250.251.1147
stewart@henkelcreekangus.ca
www.henkelcreekangus.ca**





154 ROX TANKER 10M

Black Angus | 2381203 | OXS 10M | Mar 31 '24 | Polled

BW	WW	YW	CE	BW	WW	YW	MK	CW	REA	MARB
85	792	1205	2.0	2.1	74.0	128.0	24.0	54.0	0.83	0.53

SIRE CASINO BOMBER N33
LTVF TANKER 14
 LTVF LEGEND 842

DAM RED MLK CRK GRASS ROOTS
RED ROX DIXIE FAY 8F
 RED ROX DIXIE 27D

A truly outstanding Bull for us. Moderate weight and fantastic growth made him a standout throughout his life. A.I. son of LTVF Tanker 14. Red carrier and may produce some red calves. His extra frame should bring extra lbs. and put extra money in your pocket.



155 RED ROX MR POKER 23M

Red Angus | 2391621 | OXS 23M | Apr 04 '24 | Polled

BW	WW	YW	CE	BW	WW	YW	MK	CW	REA	MARB
83	781	1131	0.0	2.4	51.0	80.0	27.0	-	-	-

SIRE FRASER POKER FACE 613D
ROX POKER FACE 20J
 RED MOON DYNA QUEEN 23B

DAM RED MLK CRK GRASS ROOTS
RED ROX DESIREE 6F
 RED ROX DESIREE 35D

He is a very dark red with a good hairy coat. He has a long body and stout. He has large testicles and comes from a good solid mother cow. We would recommend him for cows.



156 RED ROX MANNY 66M

Red Angus | 2391493 | OXS 66M | Apr 19 '24 | Polled

BW	WW	YW	CE	BW	WW	YW	MK	CW	REA	MARB
77	599	964	3.0	0.7	28.0	51.0	21.0	-	-	-

SIRE RED FINE LINE MULBERRY 26P
RED ROX BERRY JIM 2J
 RED ECLIPSE 4U X FACTOR 6X

DAM RED U-2 FOREIGNER 413B
RED U-2 FEATURE 322G
 RED U2 FEATURE 259E

A handsome stout heifer bull that we used on our own heifers in 2025. He is a very polite and good natured fellow. His dam is a moderate and trouble free cow who we selected on the U2 dispersal.



157 RED ROX MULBERRY 77M

Red Angus | 2391497 | OXS 77M | Apr 24 '24 | Polled

BW	WW	YW	CE	BW	WW	YW	MK	CW	REA	MARB
65	681	1026	7.0	-0.7	42.0	72.0	30.0	-	-	-

SIRE RED FINE LINE MULBERRY 26P
 RED ROX BERRY JIM 2J
 RED ECLIPSE 4U X FACTOR 6X

DAM RED ROX FRANZ 27F
 RED ROX MISS JAY 35J
 RED T-K MISS 132D

Should be an excellent heifer bull. Just a 65lb. birth weight with very smooth shoulders and a nice calving ease Angus head. Would anticipate heifers having an easy time calving to him.

Index OF COMMERCIAL ADVERTISERS

Northern Acreage Supply Ltd.....	Page 2
Hi-Hog	Page 3
Ag Safe	Page 8
Four Rivers Co-op	Page 9
BC Simmental Association.....	Page 11
Heartland Crop & Soil Services	Page 17
Yellowhead Hereford Association	Page 19
BC Hereford Association	Page 21
HUB International Insurance Brokers.....	Page 23
Select Sires	Page 26
Cazam Farm Supplies	Page 30
Huber Farm Equipment.....	Page 31
Sullivan Motor Products	Page 32, 33
Sure Crop Feeds	Page 34
No Days Off Transport.....	Page 36
FBC.....	Page 37
Dykstra Farm Services	Page 41
Bulkey Valley Cattlemen Association	Page 50
Westline Ford	Page 51
Nachako Valley Feeds.....	Page 59

Thank you to our generous advertisers!

FEED - PET SUPPLIES - TACK - GATES

NECHAKO VALLEY FEEDS

“Products and Service you can Trust”

250.567.4400

nechakovalleyfeeds@gmail.com

Monday - Friday 9:00 - 5:30

Saturday 9:00 - 3:00

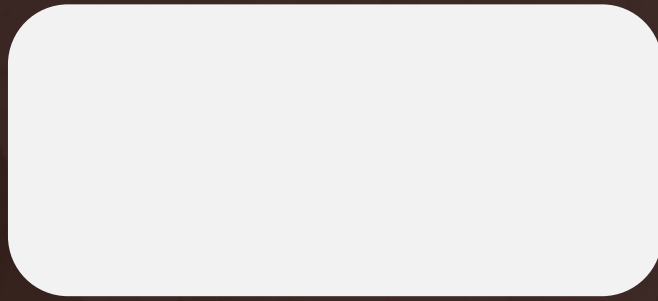
Closed Sunday



3461st Street Highway 16 West Box 1793 Vanderhoof, BC V0J 3A0

VANDERHOOF ALL BREEDS BULL SALE

C/O Brock Young
Box 1978
Vanderhoof, BC
V0J 3A0



BLACK ANGUS • RED ANGUS • CHAROLAIS • GELBVIEH • HEREFORD • SIMMENTAL